

# MERCER UNIVERSITY EMERGENCY PREPAREDNESS PLAN



## School of Medicine Building Macon Campus

## Level 1 & 2 Emergency Operations

April 2007  
Author: Jennifer M. Williams

## CONTENTS

TOPIC	PAGE
School of Medicine Contact List	3
Emergency Response Coordinator and Responsibilities	4
Building Zone Representatives and Responsibilities	5
Evacuation Assessments	6
Emergency Response Standard Operating Procedures	
• Fire alarm	7
• Fire	7-8
• Explosions	8-9
• Personal injury	9-10
• Radioactive materials spill	10-13
• Chemical spill	13-14
• Biohazardous materials spill	15-16
• Fumes, noxious but not toxic	17
• HVAC failure	17
• Power failure	17
• Telecommunications failure	17
• Water failure	17
School of Medicine Building On-Site and Off-Site Employee List	18-24

## **School of Medicine Contact List**

### **Emergency Response Coordinator:**

- Jennifer M. Williams, 301-4051

### **Building Zone Representatives:**

- ***Mercer Health Systems***
  - Margaret J. Gaskill, 301-2525
- ***First Floor School of Medicine – Medical Library, Dean’s Suite, Auditorium, and Conference Rooms***
  - Name, phone #
- ***Basic Medical Sciences – Laboratories, Faculty/Staff Offices, and Animal Care Facility***
  - Name, phone #
- ***Second Floor School of Medicine (excluding Basic Medical Sciences) - Student Tutorial Suite, Media Services, Learning Resource Center, and Community Medicine***
  - Name, phone #
- **Mercer Police**
  - 301-HELP
- **Health and Safety Office**
  - Alan Baca, 301-2544

## Level-1 Emergencies

### ***Emergency Response Coordinator and Responsibilities***

#### **Emergency Response Coordinator**

**Jennifer M. Williams**

Phone: 301-4051

E-mail: Williams\_JE@Mercer.edu

#### **Emergency Response Coordinator Responsibilities**

- The Emergency Response Coordinator is the primary contact during a Level-1 Emergency.
- This person is responsible for promptly and effectively responding to Level-1 emergencies and leading emergency operations.
- This person will coordinate with Building Zone Representatives, Mercer Police, and outside Emergency Response Personnel.
- This person will work closely with the School of Medicine Administration in planning, responding to, and recovering from Level-1 Emergencies.

## **Level-1 Emergencies**

### ***Building Zone Representatives and Responsibilities***

#### **Level-1 Building Zone Representatives**

- ***Mercer Health Systems***
  - Margaret J. Gaskill: 301-2525, Gaskill\_MJ@Mercer.edu
- ***First Floor School of Medicine – Medical Library, Dean’s Suite, Auditorium, and Conference Rooms***
  - Name, phone #
- ***Basic Medical Sciences – Laboratories, Faculty/Staff Offices, and Animal Care Facility***
  - Name, phone #
- ***Second Floor School of Medicine (excluding Basic Medical Sciences) - Student Tutorial Suite, Media Services, Learning Resource Center, and Community Medicine***
  - Name, phone #

#### **Level-1 Building Zone Representative Responsibilities**

- The primary responsibility of each Building Zone Representative in a Level – 1 Emergency is to provide the Emergency Response Coordinator with personnel coordination and information necessary to effectively manage an emergency response.
- In the case of a Fire Alarm, each Building Zone Representative will:
  - Ensure that all occupants in their zone evacuate the building and are accounted for at the Emergency Assembly Point.
  - Report their role-call to the Emergency Response Coordinator.
  - Instruct occupants in their zone that it is safe to re-enter the building, following approval from the Emergency Response Coordinator, Police, or Fire Department.

## Level-1 Emergencies

### *Evacuation Assessments*

#### Level-1 Emergency

#### Evacuation of:

	<b>Vicinity</b>	<b>Building</b>
• Fire alarm	Yes	Yes
• Fire – <b>pull fire alarm</b>	Yes	Yes
• Explosions	Yes/No	Yes/No
• Personal injury	No	No
• Radioactive materials spill	Yes/No	Yes/No
• Chemical spill	Yes/No	Yes/No
• Biohazardous materials spill	Yes/No	Yes/No
• Fumes, noxious but not toxic	Yes	Yes/No
• HVAC failure	No	No
• Power failure	No	No
• Telecommunications failure	No	No
• Water failure	No	No

## **Level-1 Emergencies**

### ***Emergency Response Standard Operating Procedures***

#### **Fire Alarm**

- When the fire alarm sounds, evacuate the building by following the **Evacuation Route** posted near your work area. Do not use elevators.
- After evacuating the building, gather at the designated **Emergency Assembly Point** located at the soccer fields located behind the School of Medicine parking lot.
- The Emergency Response Coordinator will perform a role-call, in coordination with the Building Zone Representatives, to ensure all building occupants have been evacuated and are accounted for.
- Mercer Police or the Macon Fire Department will clear the fire alarm and confirm that it is safe to re-enter the building. No one is to re-enter the building until the Emergency Response Coordinator, Police, or Fire Department have instructed you that it is safe to re-enter the building.
  - **Ideal lines of communication:** Police/Fire Department → Emergency Response Coordinator → Building Zone Representatives → Building Occupants

#### **Fire (including fires controllable by one person with an extinguisher)**

- First, **pull fire alarm** nearest to you to initiate evacuation of the building.
- Only if it is clear that the fire can be safely put out, should personnel do so.
- For a moderate fire, trained personnel can temporarily use portable fire extinguishers to control the fire for gaining time to initiate evacuation procedures.
- The School of Medicine building is equipped with Class ABC dry chemical fire extinguishers. Refer to the evacuation route map nearest you to locate fire extinguishers in the building.
- To be most effective, the extinguishing material should be aimed at the base of the fire.
- Work from the point immediately in front of the extinguisher operator and progressively move toward the rear of the fire, away from the operator.

- If more than one person is present, additional fire extinguishers should be brought to the scene, so that as one is used up, another can be quickly brought into use to prevent the fire from regaining vigor.
- If necessary, more than one fire extinguisher can be used at one time.
- If the fire is present in a hood, immediately close the hood sash. Then obtain a fire extinguisher to put out the fire, only if conditions are safely controllable by personnel and conditions are not “immediately dangerous to life and health.”
  - Closing the hood sash serves several purposes by confining the fire, reducing the amount of air available to support combustion, and preventing personnel exposure to potentially toxic fumes.

### **Explosions**

- In the event of an explosion, initiate procedures to handle fires (pull the fire alarm) or chemical spills (localize spill and clean ONLY if personnel safety is not compromised and the situation is manageable).
- If hazardous chemicals are involved and conditions could be “**immediately dangerous to life and health,**” evacuate the area, inform personnel in the area to evacuate, and contact:
  - First: Emergency 911 (911, from on campus phone: 99-911)
    - Tell the operator where in the building you are located and stay on the phone with the operator until responders arrive
  - Second: Mercer Police (301-HELP)
  - Third: Emergency Response Coordinator (301-4051)
  - Fourth: Health and Safety Office (301-2544)
- If personal injury has resulted from the explosion, follow response procedures outlined in the section titled, “Personal Injury,” which are to contact:
  - First: Mercer Police (301-HELP)
    - File a report
    - Receive emergency assistance
  - Second: Emergency Response Coordinator (301-4051)
    - File an internal report

- Third: Mercer University Benefits Office (301-2787)
  - File Worker's Compensation Claim (if medical treatment resulted from injury)
- Explosions may result from runaway chemical reactions, ruptured high-pressure vessels, or ignition of confined gases or fumes, as a few examples.
- The use of protective shields and personal protective equipment should be used where the potential for an explosion is known to be appreciable.
- Heavy gloves should be worn to protect hands; a mask and goggles should be used to protect the eyes, face, and throat.
- If an explosion occurs, changes in air pressure may occur; flying debris, secondary fires, and spilled chemicals may exacerbate the situation and lead to further reactions. Toxic fumes may be released, which is oftentimes, the most serious hazard to personnel health and safety.

### **Personal Injury**

- Immediately report **personal injuries** to:
  - First: Mercer Police (301-HELP)
    - File a report
    - Receive emergency assistance
  - Second: Emergency Response Coordinator (301-4051)
    - File an internal report
  - Third: Mercer University Benefits Office (301-2787)
    - File Worker's Compensation Claim (if medical treatment resulted from injury)
- If injury is **immediately dangerous to life, health, and safety**:
  - First: Call Emergency 911 (911, from on campus phone: 99-911)
    - Tell the operator where in the building you are located and stay on the phone with the operator until responders arrive
    - Send for help and have them call Mercer Police

- Second: Call Mercer Police (301-HELP)
- Third: Call Emergency Response Coordinator (301-4051)
- Tell Mercer Police and the Emergency Response Coordinator and if there is a need for Cardiopulmonary Resuscitation (CPR) or special First Aid supplies.
- If breathing is impaired, artificial respiration should be administered, and if heavy bleeding occurs, pressure should be applied to the wound to minimize bleeding. These two problems are immediately life threatening.
- If there is time and if it appears safe to do so (the spine has not been injured or other injuries will not be worsened by movement), then the injured person(s) should be removed from the vicinity of the accident.
  - This is to protect the rescuer as well as the victim from the effects of chemicals, fumes, or smoke that might be present at the scene.

### **Radioactive Materials Spill or Release**

In the event of an accident involving the release of a radioactive material, the **objectives of all remedial actions** are to:

- Minimize the amount of radioactive material entering the body via ingestion, inhalation, or absorption through skin and open lesions.
- Prevent the spread of radioactive contamination.
- Remove radioactive contamination from personnel.
- Initiate decontamination procedures.

**Minor Spills: A minor spill is defined as equal to or less than 1.0mCi.**

- Notify persons in the area that a spill has occurred.
- Wear gloves to prevent contamination of hands. (Wash hands first if they are contaminated as result of accident.) Do not come into direct contact with the radioactive material.
- Drop absorbent paper or cloth on spill to limit spread of contamination.
- Mark off contaminated area. Do not allow anyone to leave contaminated area without being monitored.
- **Notify:**

- First: School of Medicine Radiation Safety Officer (301-4051)
  - File internal report
  - File report of exposure to Mercer Police (301-HELP)
- Second: Mercer University Radiation Safety Officer (301-2544)
- Immediately begin decontamination procedures. Using absorbent materials and “lift away” begin decontamination from the outside of the spill and work inwards, systematically reducing the area of decontamination.
- Place contaminated materials in packaging for proper disposal
- Assign a person equipped with a survey meter to survey the area for radioactive contamination.
- Perform a radioactive contamination survey and record results.

**Major Spills: A major spill is defined as greater than 1.0mCi.**

- Decontamination of highly radioactive areas requires the direct supervision of the radiation safety officer.
- **Notify:**
  - First: School of Medicine Radiation Safety Officer (301-4051)
    - File internal report
    - File report of exposure to Mercer Police (301-HELP)
  - Second: Mercer University Radiation Safety Officer (301-2544)
- School of Medicine Radiation Safety Officer will provide specific instructions for decontamination procedures
- Document the incident with the School of Medicine Radiation Safety Officer who will generate a report for the School of Medicine administration.
- Wear gloves to prevent contamination of hands (Wash hands first if they are contaminated as result of accident). Do not come into direct contact with the radioactive material.
- Drop absorbent paper or cloth on spill to limit spread of contamination.
- Mark off contaminated area. Do not allow anyone to leave contaminated area without being monitored.

- If possible, cut off the release of radioactive materials from the source to the environment, but avoid breathing in high concentrations of radioactive material. Close windows.
- Evacuate room and close doors. Remove contaminated shoes and laboratory coats at laboratory door to avoid tracking radioactive material out of the contaminated zone.
- Shield the spill, but only if it can be done without further contamination or without significantly increasing your radiation exposure.
- Lock or guard the doors and post appropriate signs preventing unauthorized entry.
- Assemble in a nearby room with other personnel suspected of being contaminated. Wash off possibly exposed areas of the skin and immediately begin decontamination. Do not leave the control area until you have been thoroughly surveyed for contamination.

#### Emergency Procedures in Case of a **Fire including Radioactive Materials**

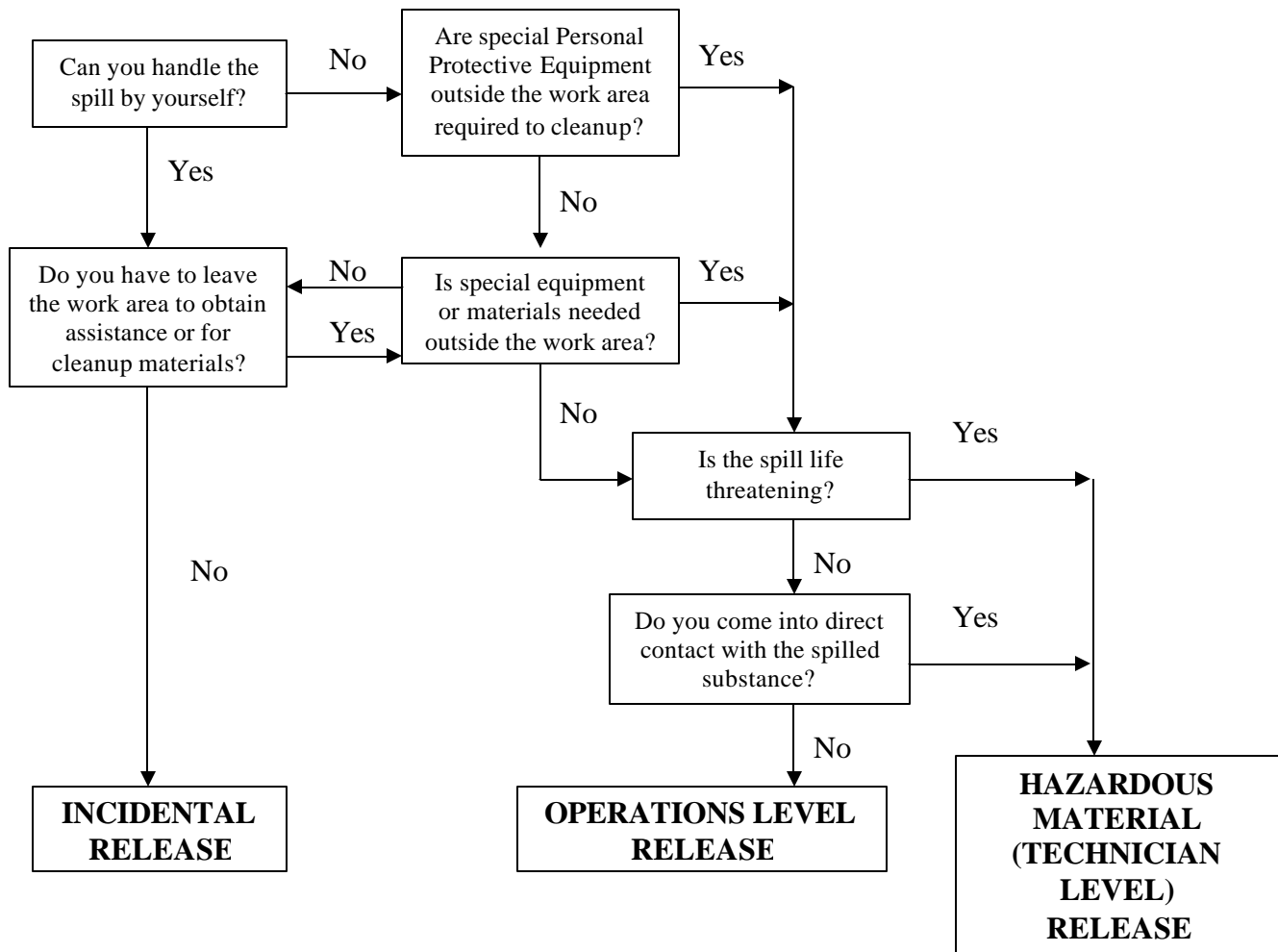
- **Immediate Response and Contacts:**
  - First: Pull fire alarm (this initiates Mercer Police response and building evacuation)
  - Second: Call the Emergency Response Coordinator (301-4051)
  - Third: Call the Health and Safety Office (301-2544)
- Remove yourself from the scene and if necessary, remove others from the scene without placing yourself in danger.
- Perform any life saving rescue and first aid if necessary, once evacuated from the scene.
- Evacuate the building by following the **Evacuation Route** posted near your work area. Do not use elevators.
- After evacuating the building, gather at the designated **Emergency Assembly Point** shown on the evacuation routes and located at the soccer fields behind the School of Medicine parking lot.
- The Emergency Response Coordinator will perform a role-call, in coordination with the Building Zone Representatives, to ensure all building occupants have been evacuated and are accounted for.

- The Health and Safety Office will call HAZMAT responders. The School of Medicine and University Radiation Safety Officers will initiate site security, safe evacuation distances, and emergency decontamination procedures.
- The Emergency Response Coordinator will coordinate with Building Zone Representatives. Building evacuees will meet with their Building Zone Representative in the Emergency Assembly Point for further instructions.

### **Chemical Spill**

- Follow the “**Spill Decision Making Flowchart**” below to determine if the spill is an incidental release, operations level release, or a hazardous materials (technician level) release. The flowchart reads as follows:
- **Incidental Release:** You can handle the spill by yourself **AND** you do not need special materials outside the work area **AND** you do not need to leave the area to obtain assistance in the clean-up
  - **If not, then:**
- **Operations Level Release:** You cannot handle the spill by yourself **AND** you need special equipment outside your work area **OR** you need to leave the area to obtain assistance in the clean-up **AND** you do not come into direct contact with the substance **AND** the spill is not life threatening
  - **If not, then:**
- **Technician Level (Hazardous Materials) Release:** You cannot handle the spill by yourself **AND** you need special equipment outside your work area **OR** you need to leave the area to obtain assistance in the clean-up **AND** you come into direct contact with the substance **OR** the spill is life threatening

## “Spill Decision Making Flowchart”

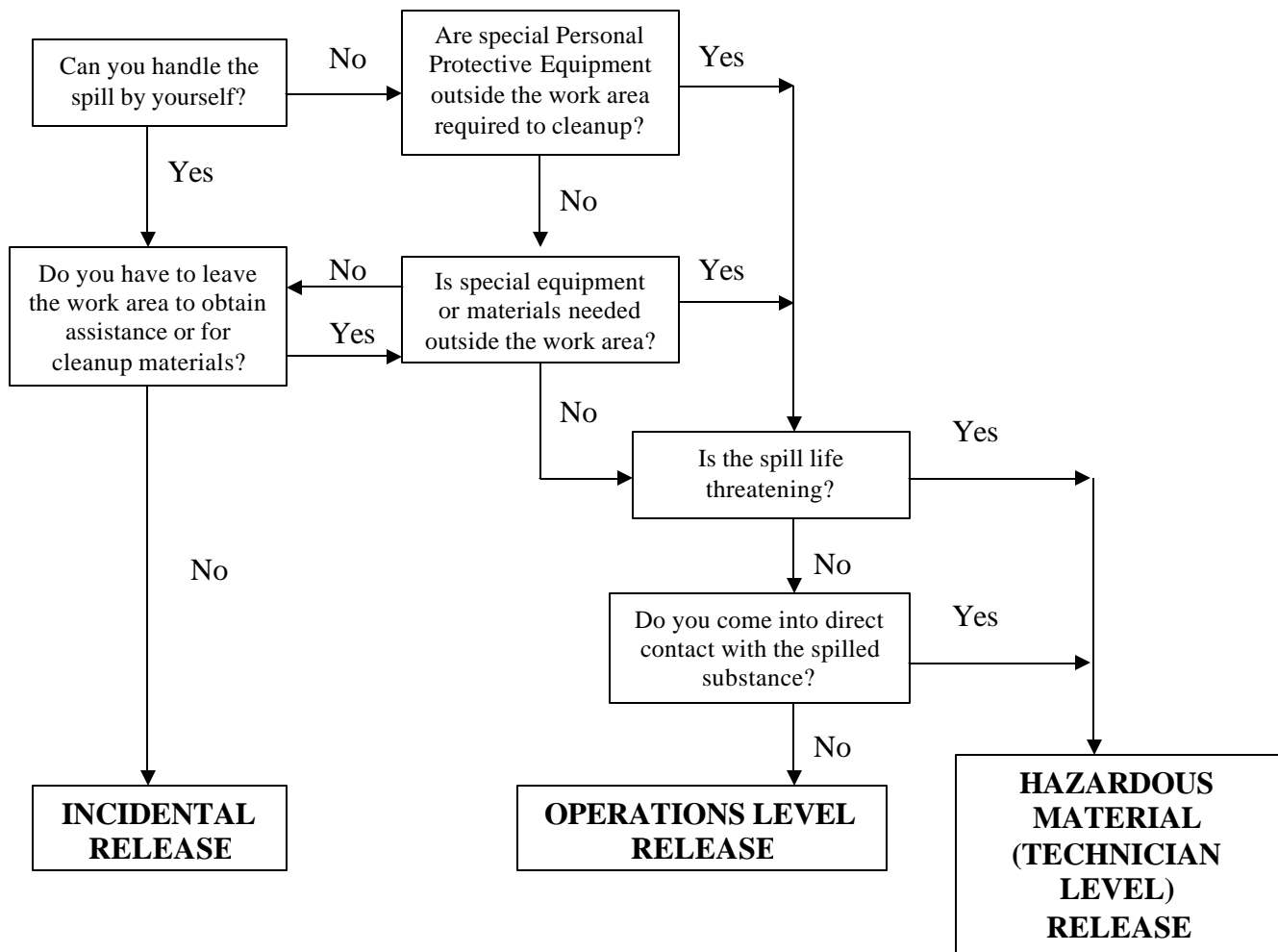


- Each laboratory with chemicals is required to have written Standard Operating Procedures outlining instructions for handling an incidental chemical spill. Follow your individual laboratory procedures.
- In the event of an Operations Level or Technician Level Chemical Spill, or if unsure how to respond, **contact:**
  - First: Emergency Response Coordinator (301- 4051)
  - Second: Health and Safety Office (301- 2544)

### **Biohazardous Materials Spill**

- Follow the “**Spill Decision Making Flowchart**” below to determine if the spill is an incidental release, operations level release, or a hazardous materials (technician level) release. The flowchart reads as follows:
- **Incidental Release:** You can handle the spill by yourself **AND** you do not need special materials outside the work area **AND** you do not need to leave the area to obtain assistance in the clean-up
  - **If not, then:**
- **Operations Level Release:** You cannot handle the spill by yourself **AND** you need special equipment outside your work area **OR** you need to leave the area to obtain assistance in the clean-up **AND** you do not come into direct contact with the substance **AND** the spill is not life threatening
  - **If not, then:**
- **Technician Level (Hazardous Materials) Release:** You cannot handle the spill by yourself **AND** you need special equipment outside your work area **OR** you need to leave the area to obtain assistance in the clean-up **AND** you come into direct contact with the substance **OR** the spill is life threatening

## “Spill Decision Making Flowchart”



- Each laboratory with biohazardous materials is required have written Standard Operating Procedures outlining instructions for handling an incidental biohazardous material spill or release. Follow your individual laboratory procedures.
- In the event of an Operations Level or Technician Level Biohazardous Materials Release, or if unsure how to respond, **contact:**
  - First: Emergency Response Coordinator (301- 4051)
  - Second: Health and Safety Office (301- 2544)
- Individuals not involved directly in the accident should evacuate the laboratory and persons wearing proper protective clothing must decontaminate the area.
- Only individuals who received documented training as required by the OSHA Bloodborne Pathogen standard are allowed to clean up materials that might be contaminated by human blood, other bodily fluids, mucous, or tissue.

### **Fumes, noxious but not toxic**

- In the event of Fumes, **contact:**
  - First: Emergency Response Coordinator (301- 4051)
  - Second: Health and Safety Office (301- 2544)
- As a general precaution, evacuate the area and inform personnel in the area to evacuate until the situation is identified.

### **HVAC Failure**

- If failure of any or all of the HVAC systems is discovered, immediately **report problem to:**
  - First: Physical Plant (752-4002)
  - Second: Emergency Response Coordinator (301-4051)

### **Power Failure**

- If power failure is discovered, immediately **report problem to:**
  - First: Physical Plant (752-4002)
  - Second: Emergency Response Coordinator (301-4051)

### **Telecommunications Failure**

- If telecommunications failure is discovered, immediately **report problem to:**
  - First: Systems & Networks (301-5138)
  - Second: Emergency Response Coordinator (301-4051)

### **Water Outage**

- If a water outage is discovered, immediately **report problem to:**
  - First: Physical Plant (752-4002)
  - Second: Emergency Response Coordinator (301-4051)

## On-Site School of Medicine Building Employee List

LAST NAME	FIRST NAME	Department	OFFICE #	Mail Box
Adkison	Linda R.	Basic Medical Sciences	2513	173
Albert	April	Medical Library	2541	153
Baggett	Johnny	Maintenance / MUSM	2527	149
Berrier	Michelle	Information Tech/Media Services	2908	169
Bina, III	William F.	Community Medicine	2804	157
Black	Asa	Basic Medical Sciences	2764	173
Bly	Gail	Basic Medical Sciences	2513	173
Bond	Carletter	Mercer Health Systems	4111	162
Bonney	Karen	Medical Library	5588	153
Bootle	William "Gus"	Radiology	2304	155
Boyer	Charlene	Mercer Health Systems	5941	162
Bridges	Christy	Research - Basic Science	2086	164
Bryan	Debbie	Mercer Health Systems	5813	162
Burtner	David E.	Family Medicine	4089	174
Chapman	Gail	Basic Medical Sciences	2513	173
Chatman	Patricia	Information Tech/Media Services	5154	169
Chen	Fan	Community Medicine	4095	157
Chen	Han	Research - Basic Science (Post Doc)	4069	164
Cline	Susan	Basic Medical Sciences	2231	173
Coleman	Gail	Admissions	2524	152
Collins	Julie	Research - Basic Science	5330	164
Collins	Kelly C.	Medical Library	2152	153
Comeau	Roger	Admissions	2531	152
Copeland	Frances ElizaBeth	Medical Library	2541	153
Cornelius	Monica	Family Medicine	633-5550	174
Cudzilo	Jay	Mercer Health Systems	2194	162
Cunningham	Connie	Mercer Health Systems	5860	162
Dalton	Martin	Dean's Office	5570	158
DeCapite	Regina	Dean's Office	2512	158
Dent	Marie	Community Medicine	4081	157
Detmer	Kristina	Basic Medical Sciences	4004	173
Donner	Robert	Pathology	4071	170
Dowd	Brenda	Medical Library	2514	153
Duggan	Bessie	Dean's Office	2600	158
Durham	Sommer A.	Research - Basic Science	5328	164

Elliott	Richard L.	Bio-Medical Ethics	2435	167
Ellis	Stephen	Medical Library	2541	153
Emig	Julie	Mercer Health Systems	2695	162
Etheridge	Lisa	Family Medicine	4089	174
Faust	Kay	Admissions	2652	152
Floyd	Kenneth	Maintenance / MUSM	2527 or 4002	149
Forbes-Rountree	Linda	Mercer Health Systems	2335	162
Ford	Darryl	Research - Animal Care	4064	165
Foster	Jennifer	Mercer Health Systems	5485	162
Fugate	Darnell	Basic Medical Sciences	4046	173
Gabriel	Sabry A.	Family Medicine	4089	174
Garner	Ron E.	Basic Medical Sciences	2764	173
Gaskill	Margaret	Mercer Health Systems	2525	162
Gerbert	Brenda	Pathology	4071	170
Gilbert	Carolyn	Research - Basic Science	4069	164
Girton	Fred	Family Medicine	2462	174
Glasgow	Wayne	Basic Medical Sciences	2209	173
Guyinn	Monique	Family Medicine	633-5547	174
Hagan	Daniel	Basic Medical Sciences	2433	173
Hanania	Gill	Mercer Health Systems	4113	162
Harris	Dona	Faculty Development	5442	160
Hart	Derek	Information Tech/Media Services	2552	169
Hart	Elizabeth	Medical Library	2515	153
Hash	Robert	Dean's Office	2512	158
Hong	Mei	Research - Basic Science	4069	164
Horst	Michael	Basic Medical Sciences	2558	173
House	Alice	Family Medicine	4089	174
House	Steven	Family Medicine	633-5550	174
Howard	Jacqueline	Mercer Health Systems	4114	162
Howard	Kristin	Medical Library	2881	153
Hudgins	Miriam C.	Medical Library	2318	153
Hudson	Youvette	Financial Aid/Registrar	2539	151
Hurst	Martha	Basic Medical Sciences	2529	173
Hutchings	Warren	Mercer Health Systems	5988	162
Jia	Haomiao	Community Medicine	4179	157
Jones	Cassandra	Mercer Health Systems	2161	162
Joshee	Lucy	Research - Basic Science	2170	164
Judd	Patricia	Academic Records	4108	156
Kacsoh	Balint	Basic Medical Sciences	2225	173
Kelly	Pauline	Mercer Health Systems	4114	162

Knight	John	Information Tech/Media Services	4079	169
Kovach	Karen	Bio-Medical Ethics	4028	167
Krampl	Anna	Medical Library	2881	153
LaBeause	Jan H.	Medical Library	2515	153
Leeper-Woodford	Sandra	Basic Medical Sciences	4080	173
Long	Gypsy	Research - Basic Science	5330	164
Lopez	Blanca	COPP	4123	163
Mack	Vance	Research - Basic Science	4155	164
Martin	Bethany	Medical Library	2881	153
Martin	Jonathan D.	Basic Medical Sciences	4046	173
Mathews	Rhonda	Registrar	5137	151
Mayorov	Vladimir	Research - Basic Science	4025	164
Meeks	Kim	Medical Library	4149	153
Milam	Shane	Information Tech/Media Services	5138	169
Moon	Robert J.	Basic Medical Sciences	4027	173
Moten	Debbie	Family Medicine	2130	174
Nelson	Roxanne	Medical Library	4057	153
Newman	Walter	Dean's Office/Research	5425	160
Noble	Erica	Research - Basic Science	5325	164
Noble	Pamela	COPP	4047	159
O'Neal	Ann N.	Family Medicine	5589/4089	174
Outland (O'Neal)	Monita	Community Medicine	5510	157
Patel	Dipesh	Family Medicine	4089	174
Pedone	Sal	Information Tech/Media Services	4020	169
Pergerson	Elaine	Dean's Office	5570	158
Piskurich	Janet	Basic Medical Sciences	4080	173
Porch	Carole	Community Medicine	2350	157
Powell	Shirley	Pathology	2374	170
Putnam	Mary	Admissions	2542	152
Rayhill	Jennifer	Family Medicine	2879	174
Reagan	Charles	Basic Medical Sciences	4065	173
Reagan	Cheryl	Accounting	4041	163
Roche, III	W. Patrick	Family Medicine	2879	174
Russ	Roy	Basic Medical Sciences	2390	173
Russell	Michael	Basic Medical Sciences	5128	173
Sánchez	René Javier	Community Medicine	5649	157
Sappington	Michelle	Mercer Health Systems	5806	162
Sawyers	Paul	Research - Animal Care	4064	165
Scott	Mary	Financial Aid	2853	151
Sides	Vickey	Mercer Health Systems	5810	162

Sinclair (Bridges)	Sherrie	Research - Basic Science	5325	164
Sippel	John	Basic Medical Sciences	4080	173
Smith	Rita B.	Medical Library	2827	153
Sohnen	Howard	Dean's Office	2196	158
Taylor	Brenda	Research - Animal Care	4064	165
Taylor	Janet	Mercer Health Systems	4045	162
Thigpen	Renee	Academic Records	4109	156
Thomas	Andre	Community Medicine	2247	161
Thomas	James L.	Basic Medical Sciences	4177	173
Thomas	McKinley	Community Medicine	5547	157
Thompson	Angela J.	Research - Basic Science	4164	164
Thompson	Jill	Community Medicine	2804	157
Thompson	Tina	Basic Medical Sciences	2556	173
Thorstens	Marilyn	Mercer Health Systems	2695	162
Tift	Jerome P.	Pathology	4071	170
Tobin	Brian W.	Basic Medical Sciences	2764	173
Tripp	Sheila	Mercer Health Systems	5809	162
Uchakin	Peter	Basic Medical Sciences	2007	173
Van De Water	Nancy	Medical Library	2516	153
Walker	Anna N.	Pathology	4071	170
Waters	Ernestine	Basic Medical Sciences	2764	173
Watkins	Marianne	Basic Medical Sciences	4080	173
Watson	Chasity	Dean's Office	2109	Mail Room
Webb	Craig	Information Tech/Media Services	5318	169
Weerasuriya	Ananda	Basic Medical Sciences	4080	173
Weires	Beth	Mercer Health Systems	4114	162
White	Angie	Mercer Health Systems	2398	162
White	Delores	Community Medicine	4053	157
Williams	Hope	Mercer Health Systems	4114	162
Williams	Jennifer	Basic Medical Sciences	4051	165
Williams	R. Steve	Pediatrics	2240	168
Williams	Tonya	Mercer Health Systems	2474	162
Windom	Barbara	Mercer Health Systems	4145	162
Woodford	Sundra	Medical School Planning	2426	166
Young	Henry E.	Basic Medical Sciences	4080	173
Zalups	Rudolfs K.	Basic Medical Sciences	2559	173

## Off-Site School of Medicine Building Employee List

LAST NAME	FIRST NAME	Department	OFFICE #	Campus Mail/
				Mail Box
Bowen	Lee	Psychiatry & Behavioral Science	2208	655 First St
Bowyer	Frank	Pediatrics	633-1102	MCCG # 46
Brandon	Sylvia	Medical Library Savannah	912 350-8124	Savannah
Brickner	Debbie	Medical Education Savannah	912 350-8076	Savannah
Bridges	Jane	Medical Library Savannah	912 350-8124	Savannah
Brown	Detra	AHEC	770 251-1630	Atlanta
Butler	William	OB/GYN	633-2643	MCCG # 47
Carter	Frances	Community Medicine	5127	Patterson Bldg
Carter	Grady	Psychiatry & Behavioral Science	5944	655 First St
Carter	Janette	Community Medicine	5478	Patterson Bldg
Carter	Rossana	Internal Medicine	5830	707 Pine St
Coburn	Kerry L.	Psychiatry & Behavioral Science	2444	655 First St
Cramer	Tracy	Medical Education	633-1063	MCCG #30
Cubbage	Ernestine	Internal Medicine	5830	707 Pine St
		Dean's Office	5570	158
Dalton	Martin	Surgery	633-1367	MCCG # 140
Daniel	Jerry B.	Community Medicine	5129	Patterson Bldg
Daniel	Patricia	Internal Medicine	5820	707 Pine St
Doonan	Suzanne	Psychiatry & Behavioral Science	2277	655 First St
Farman	Douglas P.	Internal Medicine	5850	707 Pine St
Freeman	Chris	Information Tech/Media Services	633-7618	790 First St
Grant	Brittany	Internal Medicine	5850	707 Pine St
Grills	Arbazell (Arby)	Clinical Skills	4038	Patterson Bldg
Grimsley	Ed	Internal Medicine	5820	707 Pine St
Haley	Glynnis J.	Internal Medicine	5863	707 Pine St
Hardee	Jane Neal	Psychiatry & Behavioral Science	4100	655 First St
Hayes	Mellonie S.	Psychiatry & Behavioral Science	4078	655 First St
Hill	Susan	Psychiatry & Behavioral Science	4033	655 First St
Hillman	Kymberli	Internal Medicine	5840	707 Pine St
Hudson	John	Internal Medicine	5860	707 Pine St
Innes	Bruce	Surgery	633-7088	MCCG # 140
Jackson	Shawn	Internal Medicine	5846	707 Pine St
Jackson	Stacy	Medical Education	633-1634	790 First St
James	Erskine	Internal Medicine	5860	707 Pine St
James	Julie	Surgery	633-7101	MCCG # 140
James	Sophia	Internal Medicine	5846	707 Pine St
Kang	Jing	Research - Basic Science (Law Lab)	2090	Law Lab

Katner	Harold	Internal Medicine	5850	707 Pine St
Kumar	Ritu	Internal Medicine	5850	707 Pine St
Lauterbach	Edward C.	Psychiatry & Behavioral Science	2107	655 First St
Lovejoy	Saralyn "Kay"	Internal Medicine	5824	707 Pine St
Mathis	David	Internal Medicine	5830	707 Pine St
Mathis	Mary W.	Community Medicine	5574	Patterson Bldg
McDonald	Miles	Anesthesiology	742-8297	
Meadows	John	Internal Medicine	5820	707 Pine St
Miles	Sonia	Psychiatry & Behavioral Science	5339	655 First St
Muecke	Harold	Internal Medicine	5846	707 Pine St
Mueller	Theodore "Chip"	Psychiatry & Behavioral Science	2472	655 First St
Nipper	Sheryl	Surgery	633-1367	MCCG # 140
Nobles-James	Candi	Internal Medicine	5850/5860	707 Pine St
Nylund	Cheryl	Internal Medicine	5855	707 Pine St
Orr	Matthew	Psychiatry & Behavioral Science	4098	655 First St
Parish	David	Internal Medicine	5840	707 Pine St
Patel	Raj	Internal Medicine	5850	707 Pine St
Peskoe	Stanley T.	Internal Medicine	5850	707 Pine St
Reinhart	Richard	Internal Medicine	5820	707 Pine St
Rogers	Lenora	Internal Medicine	5823	707 Pine St
Scheetz	Allison	Internal Medicine	5830	707 Pine St
Sheffield	Gail	Psychiatry & Behavioral Science	2107	655 First St
Shillcutt	Samuel	Psychiatry & Behavioral Science	2330	655 First St
Shoemaker	Sandy	Psychiatry & Behavioral Science	4068	655 First St
Smith	"Betsy" Elizabeth	Internal Medicine	5831	707 Pine St
Smith	Leah T.	Community Medicine	2283	Patterson Bldg
Smith	Michael U.	Internal Medicine	5832	707 Pine St
Stephens	Jeffrey	Internal Medicine	5850	707 Pine St
Strozier	Melton	Psychiatry & Behavioral Science	2218/4048	655 First St
Templeton	Bowden	Psychiatry & Behavioral Science	4077	655 First St
Tench	Paige	Psychiatry & Behavioral Science	5838	655 First St
Terry, III	William H.	Internal Medicine	5850	707 Pine St
Turner	Donna	Clinical Skills	4074	Patterson Bldg
Van De Water	Joseph	Surgery	633-6197 2437	MCCG # 55
Walker	Elma A. "Terri"	Psychiatry & Behavioral Science	4048/5973	655 First St
Wallace-Lonon	Vanessa	Medical Library Savannah	912 350-8124	Savannah
Wang	Zhongbiao	Surgery	2095	Law Lab
Ward (Roberts)	Marsha	Internal Medicine	5836	707 Pine St
Wieters	Krista M.	Community Medicine	5569	Patterson Bldg
Williams	Alan	Psychiatry & Behavioral Science	5482	655 First St

